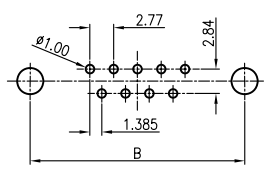
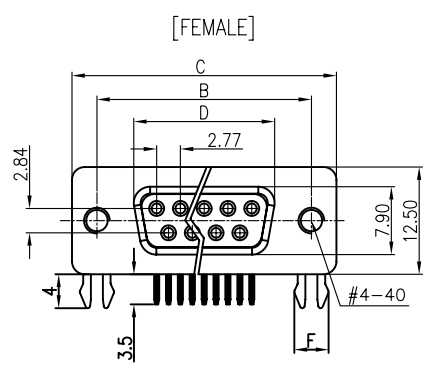
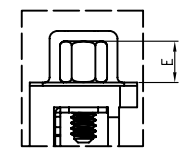
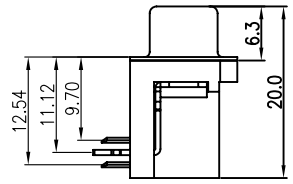
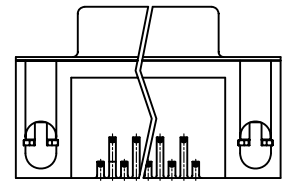


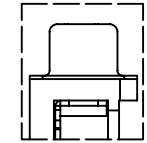
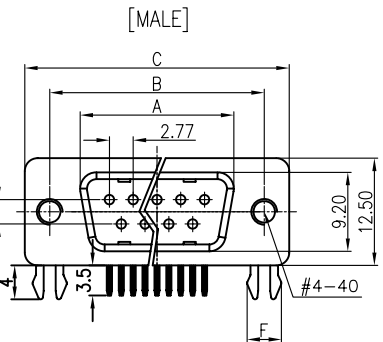
REV.	DESCRIPTION	DRAWN	CHECKED	APPROVED



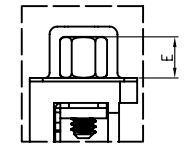
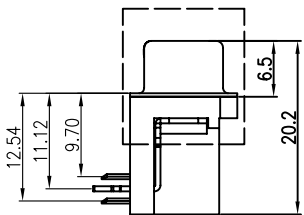
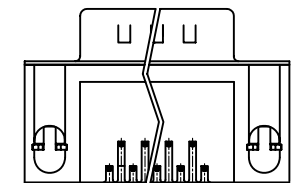
RECOMMEND PCB LAYOUT(TOLERANCE ±0.05)
(VIEW FROM TOP SIDE)



WITH SCREW TYPE



WITH RIVET TYPE



WITH SCREW AND RIVET TYPE

NOTES:

- PRODUCTS PERFORMANCE:
 - 1.0 VOLTAGE RATING: 250V AC.
 - 1.1 CONTACT CURRENT RATING: 1.5A MAX. PER PIN.
 - 1.2 CONTACT RESISTANCE: 20mΩ MAX.
 - 1.3 DIELECTRIC WITHSTANDING VOLTAGE: 500V AC(rms) FOR 1 MINUTE.
 - 1.4 INSULATION RESISTANCE: 1000MΩ MINI.
 - 1.5 OPERATING TEMPERATURE: -20°C~+70°C.
- PRODUCT NUMBER CODE:

DS1037-01 - X X X X X X X X

- SCREW DIM. E
4: 4.80mm
5: 5.80mm
- BOARD LOCK DIM. F
4: 4.00mm
7: 3.70mm
- CONTACT PLATING
T: SELECTIVE GOLD FLASH
Si: FULL GOLD FLASH
- COLOR OF HOUSING
K: BLACK
B: BLUE
- SCREW TYPE
A: WITH SCREW TYPE
B: WITH RIVET TYPE
C: WITH SCREW AND RIVET TYPE
- SHELL PLATING
N: Nickel
T: Tin
- CONNECTOR TYPE
M: MALE
F: FEMALE
- No. OF CONTACT
09: 9pos.
15: 15pos.
25: 25pos.
37: 37pos.

Dimension

Position	A±0.2	B±0.2	C±0.2	D
9	17.90	24.99	30.80	16.33
15	26.50	33.32	39.14	24.66
25	40.00	47.04	53.04	38.38
37	56.50	63.50	69.32	54.84

GENERAL TOLERANCE		ANGLE TOLERANCE	
X.	±0.60	X.	±5°
.X	±0.38	.X	±3°
.XX	±0.25	.XX	±2°
DRAWING TYPE		CUSTOMER	
SCALE		1:1	SHEET 1 OF 1
DRAWING NO.		C-DS1037-01-XXXXXXX	

PROJECTION	TITLE	D-SUB RIGHT ANGLE(9.4mm) TYPE	
UNITS	mm		
SHEET SIZE	A4	SERIES	DS1037-01 SERIES
DRB-09FB	DRB-09MB		
DRB-15FB	DRB-15MB		
DRB-25FB	DRB-25MB		
DRB-37FB	DRB-37MB		